

THE NETHERLANDS
(N E D E R L A N D)

COMMUNICATION

Concerning ⁽¹⁾:

- ~~approval granted~~
 - approval extended
 - ~~approval refused~~
 - ~~approval withdrawn~~
 - ~~production definitely discontinued~~
- of a type of tyre for agricultural vehicles pursuant to Regulation number 106.

Approval number: E4*106R00/20*4641*01

1. Manufacturer's name and address : Qingdao Qihang Tyre Co., Ltd.
Nanbu Village, Mingcun Town,
Pingdu City, 266723 Qingdao,
Shandong, China (PRC)
2. Tyre type designation⁽²⁾
 - 2.1. Brand-name(s)/trademark(s) : FORERUNNER; ROADGUIDER;
SUPERGUIDER; TYREGUIDER; MAVEO;
SIRON; GRIPSTAR; MULTISTAR;
UNIGLORY; COUGARTYRES; TERRAPLUS;
WILDCAT; ZWARTHZ; PROTECTOR;
BRONCO; HYPER; SEBA; STONETRAC;
AGROTRAC; TROTTAR; GlobeMaster;
ASTROAY; AGMAX; AGMAXX;
AGROMAX; AGROMAX; COPRA'H;
DURABLE; SUNSTYRE; FREETRANS;
EKKA ; AITC; MINTOP
 - 2.2. Trade description(s)/Commercial name(s) : IMP700; QH638; QH666; QH611; QH633;
QH601; QH608; QH609; QH654; QH639;
QH666N; QH611N; 666; 611; 611N; 601; 608;
638; 633; 609; 654; 639; 666N
3. If applicable, name and address of the manufacturer's representative : Not applicable
4. Summarized description



Approval number: E4*106R00/20*4641*01

- 4.1. The tyre size designation : 420/70-18 IMP
- 4.2. Category of use : Implement - mixed applications
- 4.3. Structure : Diagonal (bias-ply)/~~bias belted~~/radial ⁽¹⁾
- 4.4. Speed category symbol : B
- 4.5. Load-capacity index : ---
- 4.5.1. For traction (implement only) : 145
- 4.5.2. For trailer (implement only) : 158
- 4.6. Whether the tyre is to be fitted with or without an inner tube : Tubeless / Tube type
- 4.7. The supplement service description, if applicable : ---
- 4.8. Inflation pressure (kPa/~~bar~~) : 590
5. Technical service and, where applicable, test laboratory approved for purposes of approval or of verification of conformity : TÜV Rheinland Kraftfahrt GmbH
Technischer Dienst
Am Grauen Stein, 51105 Cologne,
Germany
6. Date of report issued by that service : March 20, 2023
7. Number of report issued by that service : 86-R106-1129/23-00
8. Reason(s) of extension (if applicable) : Update the technical service address
Update the regulation supplement number
Update the construction image
Addition of trade mark(s) and trade description(s)
Addition of alternative tyre size
Deletion of trade description(s)
9. Any remarks : Alternative tyre size designation 16.5/80-18 IMP
10. Place : Zoetermeer
11. Date : 04 April 2023
12. Signature :



T. H. K. Spatz

Approval number: E4*106R00/20*4641*01

13. Annex to this communication is a list of documents in the approval file deposited at the Administrative Services having delivered the approval and which can be obtained upon request .

⁽¹⁾ Strike out what does not apply.

⁽²⁾ A list of brand-name(s)/trademark(s) or Trade description(s)/Commercial name(s) may be annexed tot his communication.



APPLICATION FOR APPROVAL OF A TYPE OF PNEUMATIC TYRE ACCORDING TO ECE REGULATION No. 106, 00 SERIES OF AMENDMENTS

- | | | | |
|--------|--|---|--|
| 1. | Manufacturer's name or trade mark ⁽²⁾ | : | FORERUNNER; ROADGUIDER; SUPERGUIDER; TYREGUIDER; MAVEO; SIRRON; GRIPSTAR; MULTISTAR; UNIGLORY; COUGARTYRES; TERRAPLUS; WILDCAT; ZWARTHZ; PROTECTOR; BRONCO; HYPER; SEBA; STONETRAC; AGROTRAC; TROTSTAR; GlobeMaster; <u>ASTROAY; AGMAX; AGMAXX; AGROMAX</u> <u>AGROMAX; COPRA'H; DURABLE; SUNSTYRE; FREETRAN</u> <u>S; EKKA; AITC; MINITOP</u> |
| 2. | Tyre type designation by the manufacturer ⁽²⁾ | : | <u>IMP700; QH638; QH666; QH611; QH633; QH601; QH608; QH609 QH654; QH639; QH666N; QH611N</u> <u>666; 611; 611N; 601; 608; 638; 633; 609; 654; 639; 666N</u> |
| 3. | Manufacturer's name and address | : | Qingdao Qihang Tyre Co., Ltd.

Nanbu Village, Mingcun Town,

Pingdu City, 266723 Qingdao, Shandong, China (PRC) |
| 4. | If applicable, name and address of | : | not applicable |
| 5. | manufacturer's representative | | |
| 6. | Summarised description, | | |
| 5.1. | Tyre size designation | : | 420/70-18 IMP (16.5/80-18 IMP) |
| 5.2. | Category of use | : | Tractor : steering wheel / drive wheel - standard tread / drive wheel - special tread ⁽¹⁾
Implement : traction / trailer / mixed applications
Forestry machines : standard tread / special tread
Construction applications (IND)
Diagonal (bias-ply) / Bias belted / Radial ⁽¹⁾ |
| 5.3. | Structure | : | Diagonal (bias-ply) / Bias belted / Radial ⁽¹⁾ |
| 5.4. | Speed category symbol | : | B |
| 5.5. | Load capacity indices | : | Not applicable |
| 5.5.1. | for traction (implement only) | : | 145 |
| 5.5.2. | for trailer (implement only) | : | 158 |
| 7. | Overall dimensions (design) | : | Calculated / Annex 5 ⁽¹⁾ |
| | overall section width | : | 409 / 413 |
| | outer diameter | : | 1076 / 1073 |
| 8. | Factor 'x' | : | 0.8 |
| 9. | The supplementary service description | : | Not applicable |
| 10. | Ply-rating number for diagonal (bias ply) tyres | : | 18PR |
| 11. | Rims on which the tyre can be mounted | : | 13.00 |
| 12. | Measuring rim and test rim | : | see attached test report |
| 13. | State whether the tyre is | : | Tubeless / Tube type ⁽¹⁾ |
| 14. | Cold inflation the tyre is | : | 2.5bar |
| 15. | Inflation pressure for measuring | : | 5.9bar |
| 16. | The test pressure | : | see attached test report |
| 17. | Submitted for approval on (date) | : | December 5, 2022 |

We herewith declare that we have not applied and will not apply for approval with another Contracting Party of the ECE for the same type of product.

MANUFACTURER'S STAMP

Signature :



Name:

THIS APPLICATION IS ACCOMPANIED BY:

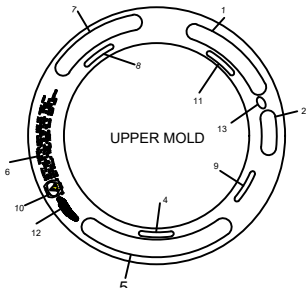
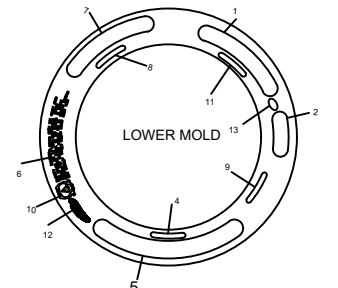
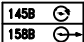
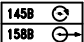


- A drawing of the tyre's side wall, tread and dimensioned cross section.
- The test report.

(1) Strike out what does not apply.

(2) Modified points are underlined for extension.

TREAD:6 PLIES NYLON
SIDEWALL:6 PLIES NYLON

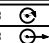
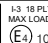


TREAD PATTERNS
REFER TO ATTACHMENT NO.1

		
	UPPER MOLD	LOWER MOLD
1	420/70-18 IMP (16.5/70-18 IMP)	420/70-18 IMP (16.5/70-18 IMP)
2	 1.3 18 PLY RATING NYLON MAX LOAD 4250kg AT 590kPa COLD	 1.3 18 PLY RATING NYLON MAX LOAD 4250kg AT 590kPa COLD E3 106R-004641
4	MADE IN CHINA	MADE IN CHINA
5	BRAND TO ATTACHMENT NO.1	BRAND TO ATTACHMENT NO.1
6	SAFETY WARNING:	SAFETY WARNING:
7		
8		DOT 156 xxxx-date code
9	RIM 13.00	RIM 13.00
10		
11	TUBE TYPE	TUBE TYPE
12	ROTATION	ROTATION
13	PATTERN TO ATTACHMENT NO.1	PATTERN TO ATTACHMENT NO.1

TIRE SIZE	LOAD INDEX	SPEED SYMBOL	TYPE	D(mm)	S(mm)	A(mm)	DWG.NO	DATE	
420/70-18	145/158	B	TUBE TYPE	1045	418	330	JS1.045.12.36.A	2022.12.15	
DRAWN BY	ZHANG TINGTING	CHECK BY	YUAN HONGTAO	APPROVED BY	SHEN CHUNXIN	QINGDAO QIHANG TYRE CO.,LTD.			

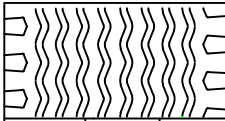
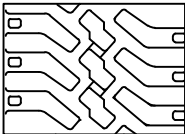
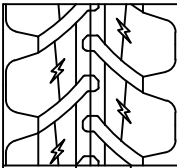
TREAD:6 PLIES NYLON
SIDEWALL:6 PLIES NYLON

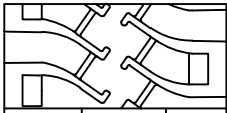
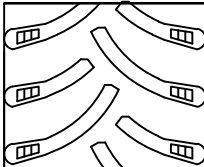
TREAD PATTERNS
REFER TO ATTACHMENT NO.2

	UPPER MOLD	LOWER MOLD
1	420/70-18 IMP (16.5/70-18 IMP)	420/70-18 IMP (16.5/70-18 IMP)
2	<div> <div>145B</div> <div>158B</div> </div> <div>  </div> <div> I-3 18 PLY RATING NYLON MAX LOAD 4250kg AT 590kPa COLD </div>	<div> <div>145B</div> <div>158B</div> </div> <div>  </div> <div> I-3 18 PLY RATING NYLON MAX LOAD 4250kg AT 590kPa COLD E4 106R-004641 </div>
4	MADE IN CHINA	MADE IN CHINA
5	BRAND TO ATTACHMENT NO.2	BRAND TO ATTACHMENT NO.2
6	SAFETY WARNING:	SAFETY WARNING:
7		
8		DOT 156 xxxx-date code
9	RIM 13.00	RIM 13.00
10		
11	TUBE TYPE	TUBE TYPE
12	ROTATION	ROTATION
13	PATTERN TO ATTACHMENT NO.2	PATTERN TO ATTACHMENT NO.2

TIRE SIZE	LOAD INDEX	SPEED SYMBOL	TYPE	D(mm)	S(mm)	A(mm)	DWG.NO	DATE	
420/70-18	145/158	B	TUBE TYPE	1045	418	330	JS1.045.12.36.A	2022.12.15	
DRAWN BY	ZHANG TINGTING	CHECK BY	YUAN HONGTAO	APPROVED BY	SHEN CHUNXIN	QINGDAO QIHANG TYRE CO.,LTD.			

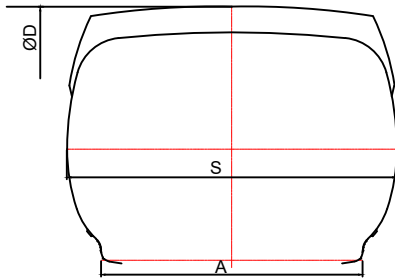
ATTACHMENT NO.2

	QH633	PATTERN DEPTH	20mm
	QH609	PATTERN DEPTH	25mm
	QH654	PATTERN DEPTH	44mm

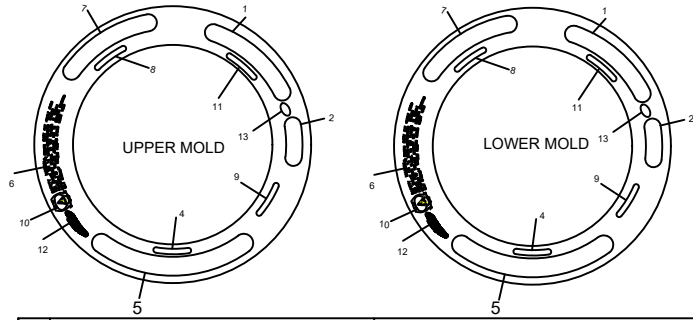
	QH639	PATTERN DEPTH	14mm
	QH666N	PATTERN DEPTH	32mm

BRAND	PATTERNS	BRAND	PATTERNS	BRAND	PATTERNS	BRAND	PATTERNS
FORERUNNER	QH633/QH609/QH654/QH666N QH639	GRIPSTAR	QH633/QH609/QH654/QH666N QH639	ZWARTHZ	QH633/QH609/QH654/QH666N QH639	AGMAX	QH633/QH609/QH654/QH666N QH639
ROADGUIDER	QH633/QH609/QH654/QH666N QH639	MULTISTAR	QH633/QH609/QH654/QH666N QH639	PROTECTOR	QH633/QH609/QH654/QH666N QH639	TROTTAR	QH633/QH609/QH654/QH666N QH639
SUPERGUIDER	QH633/QH609/QH654/QH666N QH639	UNIGLORY	QH633/QH609/QH654/QH666N QH639	BRONCO	QH633/QH609/QH654/QH666N QH639	GlobeMaster	QH633/QH609/QH654/QH666N QH639
TYREGUIDER	QH633/QH609/QH654/QH666N QH639	COUGARTYRES	QH633/QH609/QH654/QH666N QH639	HYPER	QH633/QH609/QH654/QH666N QH639	ASTROAY	QH633/QH609/QH654/QH666N QH639
MAVEO	QH633/QH609/QH654/QH666N QH639	TERRAPLUS	QH633/QH609/QH654/QH666N QH639	SEBA	QH633/QH609/QH654/QH666N QH639	DURABLE	QH633/QH609/QH654/QH666N QH639
SIRRON	QH633/QH609/QH654/QH666N QH639	WILDCAT	QH633/QH609/QH654/QH666N QH639	STONETRAC	QH633/QH609/QH654/QH666N QH639	SUNSTYRE	QH633/QH609/QH654/QH666N QH639
AGROMAX	QH633/QH609/QH654/QH666N QH639	AGROTRAC	QH633/QH609/QH654/QH666N QH639	AGMAXX	QH633/QH609/QH654/QH666N QH639	FREETRANS	QH633/QH609/QH654/QH666N QH639
AITC	QH633/QH609/QH654/QH666N QH639	MINITOP	QH633/QH609/QH654/QH666N QH639	COPRA'H	QH633/QH609/QH654/QH666N QH639	EKKA	QH633/QH609/QH654/QH666N QH639
DRAWN BY	YANG CHENBEI	CHECK BY	YUAN HONGTAO	APPROVED BY	SHEN CHUNXIN	QINGDAO QIHANG TYRE CO.,LTD.	

TREAD:6 PLIES NYLON
SIDEWALL:6 PLIES NYLON



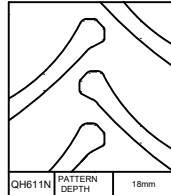
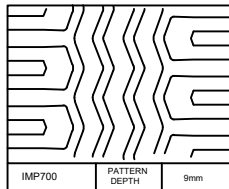
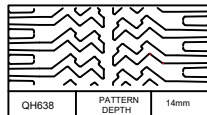
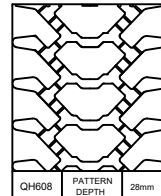
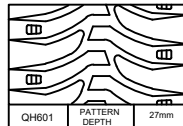
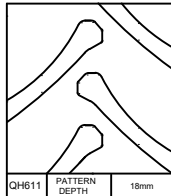
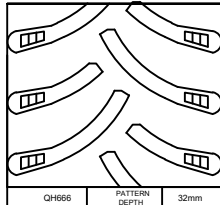
TREAD PATTERNS
REFER TO ATTACHMENT NO.3



	UPPER MOLD	LOWER MOLD
1	420/70-18 IMP (16.5/70-18 IMP)	420/70-18 IMP (16.5/70-18 IMP)
2	 I-3 18 PLY RATING NYLON MAX LOAD 4250kg AT 590kPa COLD	 I-3 18 PLY RATING NYLON MAX LOAD 4250kg AT 590kPa COLD (E4) 106R-004641
4	MADE IN CHINA	MADE IN CHINA
5	BRAND TO ATTACHMENT NO.3	BRAND TO ATTACHMENT NO.3
6	SAFETY WARNING:	SAFETY WARNING:
7		
8		DOT 156 xxxx-date code
9	RIM 13.00	RIM 13.00
10		
11	TUBELESS	TUBELESS
12	ROTATION	ROTATION
13	PATTERN TO ATTACHMENT NO.3	PATTERN TO ATTACHMENT NO.3

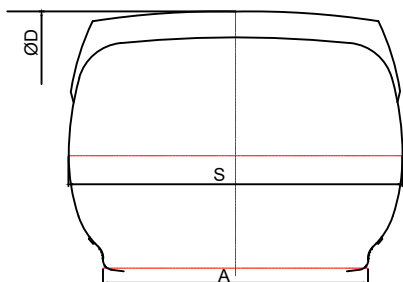
TIRE SIZE	LOAD INDEX	SPEED SYMBOL	TYPE	D(mm)	S(mm)	A(mm)	DWG.NO	DATE	
420/70-18	145/158	B	TUBE TYPE	1045	418	330	JS1.045.12.36.A	2022.12.15	
DRAWN BY	ZHANG TINGTING		CHECK BY	YUAN HONGTAO		APPROVED BY	SHEN CHUNXIN		QINGDAO QIHANG TYRE CO.,LTD.

ATTACHMENT NO.3

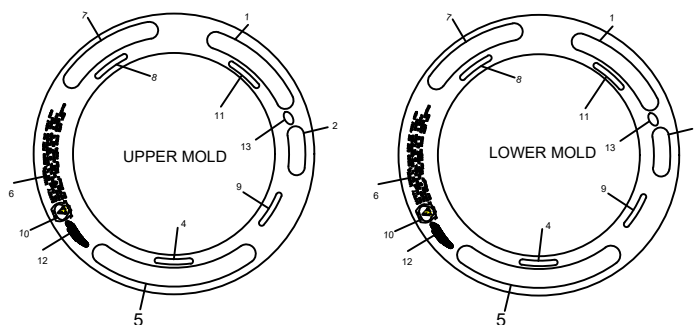


BRAND	PATTERNS	BRAND	PATTERNS	BRAND	PATTERNS	BRAND	PATTERNS
FORERUNNER	QH666/QH611/QH601/QH611N QH608/QH638/IMP700	GRIPSTAR	QH666/QH611/QH601/QH611N QH608/QH638/IMP700	ZWARTHZ	QH666/QH611/QH601/QH611N QH608/QH638/IMP700	AGMAX	QH666/QH611/QH601/QH611N QH608/QH638/IMP700
ROADGUIDER	QH666/QH611/QH601/QH611N QH608/QH638/IMP700	MULTISTAR	QH666/QH611/QH601/QH611N QH608/QH638/IMP700	PROTECTOR	QH666/QH611/QH601/QH611N QH608/QH638/IMP700	TROTTAR	QH666/QH611/QH601/QH611N QH608/QH638/IMP700
SUPERGUIDER	QH666/QH611/QH601/QH611N QH608/QH638/IMP700	UNIGLORY	QH666/QH611/QH601/QH611N QH608/QH638/IMP700	BRONCO	QH666/QH611/QH601/QH611N QH608/QH638/IMP700	GlobeMaster	QH666/QH611/QH601/QH611N QH608/QH638/IMP700
TYREGUIDER	QH666/QH611/QH601/QH611N QH608/QH638/IMP700	COUGARTYRES	QH666/QH611/QH601/QH611N QH608/QH638/IMP700	HYPER	QH666/QH611/QH601/QH611N QH608/QH638/IMP700	ASTROAY	QH666/QH611/QH601/QH611N QH608/QH638/IMP700
MAVEO	QH666/QH611/QH601/QH611N QH608/QH638/IMP700	TERRAPLUS	QH666/QH611/QH601/QH611N QH608/QH638/IMP700	SEBA	QH666/QH611/QH601/QH611N QH608/QH638/IMP700	DURABLE	QH666/QH611/QH601/QH611N QH608/QH638/IMP700
SIRRON	QH666/QH611/QH601/QH611N QH608/QH638/IMP700	WILDCAT	QH666/QH611/QH601/QH611N QH608/QH638/IMP700	STONE TRAC	QH666/QH611/QH601/QH611N QH608/QH638/IMP700	SUNSTYRE	QH666/QH611/QH601/QH611N QH608/QH638/IMP700
AGROMAX	QH666/QH611/QH601/QH611N QH608/QH638/IMP700	AGROTRAC	QH666/QH611/QH601/QH611N QH608/QH638/IMP700	AGMAXX	QH666/QH611/QH601/QH611N QH608/QH638/IMP700	FREETRANS	QH666/QH611/QH601/QH611N QH608/QH638/IMP700
AITC	QH666/QH611/QH601/QH611N QH608/QH638/IMP700	MINITOP	QH666/QH611/QH601/QH611N QH608/QH638/IMP700	COPRAH	QH666/QH611/QH601/QH611N QH608/QH638/IMP700	EKKA	QH666/QH611/QH601/QH611N QH608/QH638/IMP700
DRAWN BY	YANG CHENBEI	CHECK BY	YUAN HONGTAO	APPROVED BY	SHEN CHUNXIN	QINGDAO QIHANG TYRE CO.,LTD.	

TREAD:6 PLIES NYLON
SIDEWALL:6 PLIES NYLON



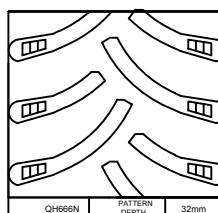
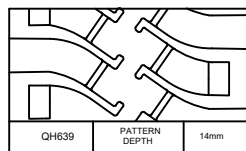
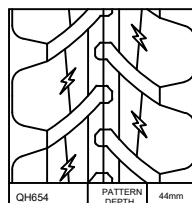
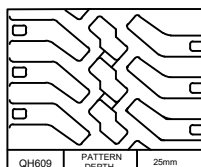
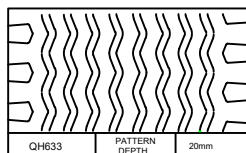
TREAD PATTERNS
REFER TO ATTACHMENT NO.4



	UPPER MOLD	LOWER MOLD
1	420/70-18 IMP (16.5/70-18 IMP)	420/70-18 IMP (16.5/70-18 IMP)
2	145B I-3 18 PLY RATING NYLON 158B MAX LOAD 4250kg AT 590kPa COLD	145B I-3 18 PLY RATING NYLON 158B MAX LOAD 4250kg AT 590kPa COLD E4 106R-004641
4	MADE IN CHINA	MADE IN CHINA
5	BRAND TO ATTACHMENT NO.4	BRAND TO ATTACHMENT NO.4
6	SAFETY WARNING:	SAFETY WARNING:
7		
8		DOT 156 xxxx-date code
9	RIM 13.00	RIM 13.00
10		
11	TUBELESS	TUBELESS
12	ROTATION	ROTATION
13	PATTERN TO ATTACHMENT NO.4	PATTERN TO ATTACHMENT NO.4

TIRE SIZE	LOAD INDEX	SPEED SYMBOL	TYPE	D(mm)	S(mm)	A(mm)	DWG.NO	DATE	
420/70-18	145/158	B	TUBE TYPE	1045	418	330	JS1.045.12.36.A	2022.12.15	
DRAWN BY	ZHANG TINGTING		CHECK BY	YUAN HONGTAO		APPROVED BY	SHEN CHUNXIN		QINGDAO QIHANG TYRE CO.,LTD.

ATTACHMENT NO.4



BRAND	PATTERNS	BRAND	PATTERNS	BRAND	PATTERNS	BRAND	PATTERNS
FORERUNNER	QH633/QH609/QH654/QH666N QH639	GRIPSTAR	QH633/QH609/QH654/QH666N QH639	ZWARTHZ	QH633/QH609/QH654/QH666N QH639	AGMAX	QH633/QH609/QH654/QH666N QH639
ROADGUIDER	QH633/QH609/QH654/QH666N QH639	MULTISTAR	QH633/QH609/QH654/QH666N QH639	PROTECTOR	QH633/QH609/QH654/QH666N QH639	TROTTAR	QH633/QH609/QH654/QH666N QH639
SUPERGUIDER	QH633/QH609/QH654/QH666N QH639	UNIGLORY	QH633/QH609/QH654/QH666N QH639	BRONCO	QH633/QH609/QH654/QH666N QH639	GlobeMaster	QH633/QH609/QH654/QH666N QH639
TYREGUIDER	QH633/QH609/QH654/QH666N QH639	COUGARTYRES	QH633/QH609/QH654/QH666N QH639	HYPER	QH633/QH609/QH654/QH666N QH639	ASTROAY	QH633/QH609/QH654/QH666N QH639
MAVEO	QH633/QH609/QH654/QH666N QH639	TERRAPLUS	QH633/QH609/QH654/QH666N QH639	SEBA	QH633/QH609/QH654/QH666N QH639	DURABLE	QH633/QH609/QH654/QH666N QH639
SIRRON	QH633/QH609/QH654/QH666N QH639	WILDCAT	QH633/QH609/QH654/QH666N QH639	STONETRAC	QH633/QH609/QH654/QH666N QH639	SUNSTYRE	QH633/QH609/QH654/QH666N QH639
AGROMAX	QH633/QH609/QH654/QH666N QH639	AGROTRAC	QH633/QH609/QH654/QH666N QH639	AGMAXX	QH633/QH609/QH654/QH666N QH639	FREETRANS	QH633/QH609/QH654/QH666N QH639
AITC	QH633/QH609/QH654/QH666N QH639	MINITOP	QH633/QH609/QH654/QH666N QH639	COPRA'H	QH633/QH609/QH654/QH666N QH639	EKKA	QH633/QH609/QH654/QH666N QH639
DRAWN BY	YANG CHENBEI	CHECK BY	YUAN HONGTAO	APPROVED BY	SHEN CHUNXIN	QINGDAO QIHANG TYRE CO.,LTD.	

TREAD:6 PLIES NYLON
SIDEWALL:6 PLIES NYLON

TREAD PATTERNS
REFER TO ATTACHMENT NO.5

	UPPER MOLD	LOWER MOLD
1	420/70-18 IMP (16.5/70-18 IMP)	420/70-18 IMP (16.5/70-18 IMP)
2	<div>145B</div> <div>158B</div> <div>13 18 PLY RATING NYLON MAX LOAD 4250kg AT 590kPa COLD</div>	<div>145B</div> <div>158B</div> <div>13 18 PLY RATING NYLON MAX LOAD 4250kg AT 590kPa COLD</div> <div>E4 106R-004641</div>
4	MADE IN CHINA	MADE IN CHINA
5	BRAND TO ATTACHMENT NO.5	BRAND TO ATTACHMENT NO.5
6	SAFETY WARNING:	SAFETY WARNING:
7		
8		DOT 156 xxxx-date code
9	RIM 13.00	RIM 13.00
10		
11	TUBE TYPE	TUBE TYPE
12	ROTATION	ROTATION
13	PATTERN TO ATTACHMENT NO.5	PATTERN TO ATTACHMENT NO.5

TIRE SIZE	LOAD INDEX	SPEED SYMBOL	TYPE	D(mm)	S(mm)	A(mm)	DWG.NO	DATE	
420/70-18	145/158	B	TUBE TYPE	1045	418	330	JS1.045.12.36.A	2022.12.15	
DRAWN BY	ZHANG TINGTING		CHECK BY	YUAN HONGTAO		APPROVED BY	SHEN CHUNXIN	QINGDAO QIHANG TYRE CO.,LTD.	

ATTACHMENT NO.5

666 PATTERN DEPTH 32mm

611 PATTERN DEPTH 18mm

601 PATTERN DEPTH 27mm

608 PATTERN DEPTH 28mm

638 PATTERN DEPTH 14mm

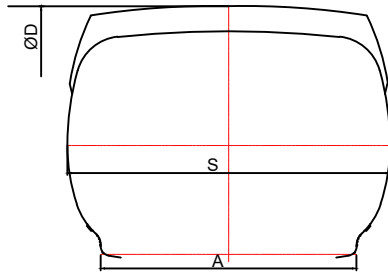
IMP700 PATTERN DEPTH 9mm

611N PATTERN DEPTH 18mm

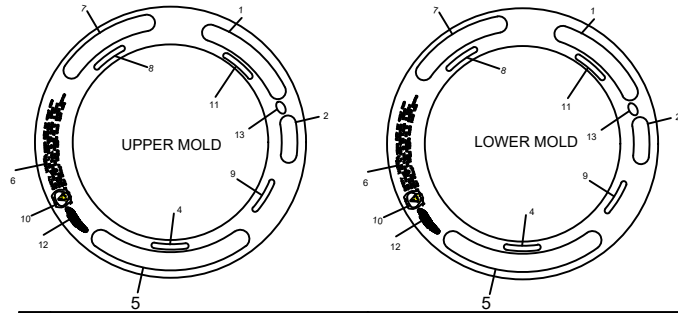
BRAND	PATTERNS	BRAND	PATTERNS	BRAND	PATTERNS	BRAND	PATTERNS
FORERUNNER	666/611/601/611N 608/638/IMP700	GRIPSTAR	666/611/601/611N 608/638/IMP700	ZWARTHZ	666/611/601/611N 608/638/IMP700	AGMAX	666/611/601/611N 608/638/IMP700
ROADGUIDER	666/611/601/611N 608/638/IMP700	MULTISTAR	666/611/601/611N 608/638/IMP700	PROTECTOR	666/611/601/611N 608/638/IMP700	TROTTAR	666/611/601/611N 608/638/IMP700
SUPERGUIDER	666/611/601/611N 608/638/IMP700	UNIGLORY	666/611/601/611N 608/638/IMP700	BRONCO	666/611/601/611N 608/638/IMP700	GlobeMaster	666/611/601/611N 608/638/IMP700
TYREGUIDER	666/611/601/611N 608/638/IMP700	COUGARTYRES	666/611/601/611N 608/638/IMP700	HYPER	666/611/601/611N 608/638/IMP700	ASTROAY	666/611/601/611N 608/638/IMP700
MAVEO	666/611/601/611N 608/638/IMP700	TERRAPLUS	666/611/601/611N 608/638/IMP700	SEBA	666/611/601/611N 608/638/IMP700	DURABLE	666/611/601/611N 608/638/IMP700
SIRON	666/611/601/611N 608/638/IMP700	WILDCAT	666/611/601/611N 608/638/IMP700	STONETRAC	666/611/601/611N 608/638/IMP700	SUNSTYRE	666/611/601/611N 608/638/IMP700
AGROMAX	666/611/601/611N 608/638/IMP700	AGROTRAC	666/611/601/611N 608/638/IMP700	AGMAXX	666/611/601/611N 608/638/IMP700	FREETRANS	666/611/601/611N 608/638/IMP700
AITC	666/611/601/611N 608/638/IMP700	MINITOP	666/611/601/611N 608/638/IMP700	COPRA'H	666/611/601/611N 608/638/IMP700	EKKA	666/611/601/611N 608/638/IMP700

DRAWN BY	YANG CHENBEI	CHECK BY	YUAN HONGTAO	APPROVED BY	SHEN CHUNXIN	QINGDAO QIHANG TYRE CO.,LTD.
----------	--------------	----------	--------------	-------------	--------------	------------------------------

TREAD:6 PLIES NYLON
SIDEWALL:6 PLIES NYLON



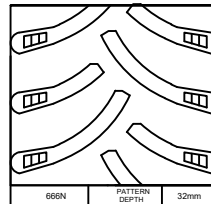
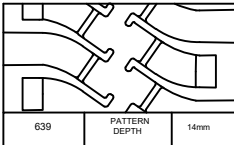
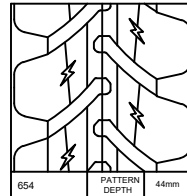
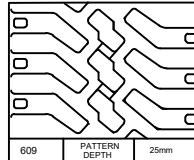
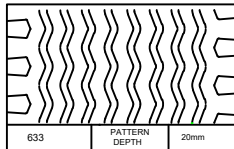
TREAD PATTERNS
REFER TO ATTACHMENT NO.6



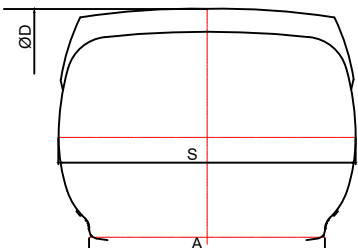
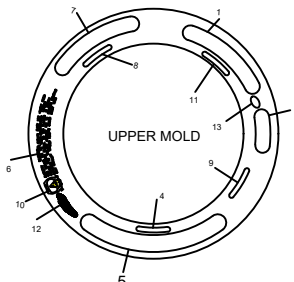
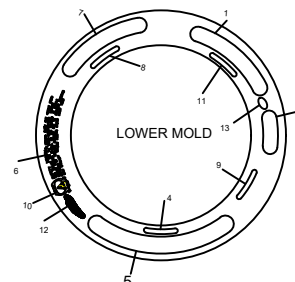
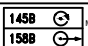
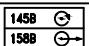


	UPPER MOLD	LOWER MOLD
1	420/70-18 IMP (16.5/70-18 IMP)	420/70-18 IMP (16.5/70-18 IMP)
2	I-3 18 PLY RATING NYLON MAX LOAD 4250kg AT 590kPa COLD	I-3 18 PLY RATING NYLON MAX LOAD 4250kg AT 590kPa COLD (E4) 106R-004641
4	MADE IN CHINA	MADE IN CHINA
5	BRAND TO ATTACHMENT NO.6	BRAND TO ATTACHMENT NO.6
6	SAFETY WARNING:	SAFETY WARNING:
7		
8		DOT 156 xxxx-date code
9	RIM 13.00	RIM 13.00
10		
11	TUBE TYPE	TUBE TYPE
12	ROTATION	ROTATION
13	PATTERN TO ATTACHMENT NO.6	PATTERN TO ATTACHMENT NO.6

TIRE SIZE	LOAD INDEX	SPEED SYMBOL	TYPE	D(mm)	S(mm)	A(mm)	DWG.NO	DATE	
420/70-18	145/158	B	TUBE TYPE	1045	418	330	JS1.045.12.36.A	2022.12.15	
DRAWN BY	ZHANG TINGTING		CHECK BY	YUAN HONGTAO		APPROVED BY	SHEN CHUNXIN		QINGDAO QIHANG TYRE CO.,LTD.

ATTACHMENT NO.6



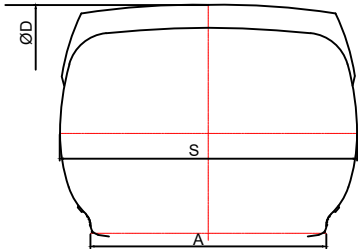
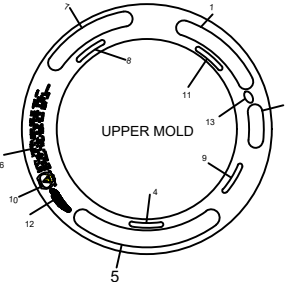
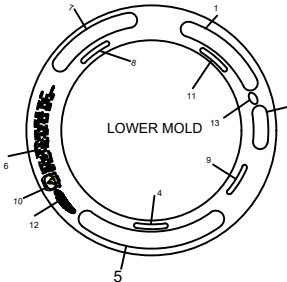
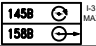
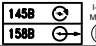



BRAND	PATTERNS	BRAND	PATTERNS	BRAND	PATTERNS	BRAND	PATTERNS
FORERUNNER	633/609/654/666N 639	GRIPSTAR	633/609/654/666N 639	ZWARTHZ	633/609/654/666N 639	AGMAX	633/609/654/666N 639
ROADGUIDER	633/609/654/666N 639	MULTISTAR	633/609/654/666N 639	PROTECTOR	633/609/654/666N 639	TROTTAR	633/609/654/666N 639
SUPERGUIDER	633/609/654/666N 639	UNIGLORY	633/609/654/666N 639	BRONCO	633/609/654/666N 639	GlobeMaster	633/609/654/666N 639
TYREGUIDER	633/609/654/666N 639	COUGARTYRES	633/609/654/666N 639	HYPER	633/609/654/666N 639	ASTROAY	633/609/654/666N 639
MAVEO	633/609/654/666N 639	TERRAPLUS	633/609/654/666N 639	SEBA	633/609/654/666N 639	DURABLE	633/609/654/666N 639
SIRON	633/609/654/666N 639	WILDCAT	633/609/654/666N 639	STONETRAC	633/609/654/666N 639	SUNSTYRE	633/609/654/666N 639
AGROMAX	633/609/654/666N 639	AGROTRAC	633/609/654/666N 639	AGMAXX	633/609/654/666N 639	FREETRANS	633/609/654/666N 639
AITC	633/609/654/666N 639	MINITOP	633/609/654/666N 639	COPRA'H	633/609/654/666N 639	EKKA	633/609/654/666N 639
DRAWN BY	YANG CHENBEI	CHECK BY	YUAN HONGTAO	APPROVED BY	SHEN CHUNXIN	QINGDAO QIHANG TYRE CO.,LTD.	

<p>TREAD:6 PLIES NYLON SIDEWALL:6 PLIES NYLON</p>  <p>TREAD PATTERNS REFER TO ATTACHMENT NO.7</p>									
 <p>UPPER MOLD</p>					 <p>LOWER MOLD</p>				
1 420/70-18 IMP (16.5/70-18 IMP)					420/70-18 IMP (16.5/70-18 IMP)				
2  1.3 18 PLY RATING NYLON MAX LOAD 4250kg AT 590kPa COLD					2  1.3 18 PLY RATING NYLON MAX LOAD 4250kg AT 590kPa COLD				
4 MADE IN CHINA					MADE IN CHINA				
5 BRAND TO ATTACHMENT NO.7					BRAND TO ATTACHMENT NO.7				
6 SAFETY WARNING:					SAFETY WARNING:				
7									
8					DOT 156 xxxx-date code				
9 RIM 13.00					RIM 13.00				
10 									
11 TUBELESS					TUBELESS				
12 ROTATION					ROTATION				
13 PATTERN TO ATTACHMENT NO.7					PATTERN TO ATTACHMENT NO.7				
TIRE SIZE	LOAD INDEX	SPEED SYMBOL	TYPE	D(mm)	S(mm)	A(mm)	DWG.NO	DATE	
420/70-18	145/158	B	TUBE TYPE	1045	418	330	JS1.045.12.36.A	2022.12.15	
DRAWN BY	ZHANG TINGTING		CHECK BY	YUAN HONGTAO		APPROVED BY	SHEN CHUNXIN		QINGDAO QIHANG TYRE CO.,LTD.

ATTACHMENT NO.7

BRAND	PATTERNS	BRAND	PATTERNS	BRAND	PATTERNS	BRAND	PATTERNS
FORERUNNER	666/611/601/611N 608/638/IMP700	GRIPSTAR	666/611/601/611N 608/638/IMP700	ZWARTHZ	666/611/601/611N 608/638/IMP700	AGMAX	666/611/601/611N 608/638/IMP700
ROADGUIDER	666/611/601/611N 608/638/IMP700	MULTISTAR	666/611/601/611N 608/638/IMP700	PROTECTOR	666/611/601/611N 608/638/IMP700	TROTTAR	666/611/601/611N 608/638/IMP700
SUPERGUIDER	666/611/601/611N 608/638/IMP700	UNIGLORY	666/611/601/611N 608/638/IMP700	BRONCO	666/611/601/611N 608/638/IMP700	GlobeMaster	666/611/601/611N 608/638/IMP700
TYREGUIDER	666/611/601/611N 608/638/IMP700	COUGARTYRES	666/611/601/611N 608/638/IMP700	HYPER	666/611/601/611N 608/638/IMP700	ASTROAY	666/611/601/611N 608/638/IMP700
MAVEO	666/611/601/611N 608/638/IMP700	TERRAPLUS	666/611/601/611N 608/638/IMP700	SEBA	666/611/601/611N 608/638/IMP700	DURABLE	666/611/601/611N 608/638/IMP700
SIRON	666/611/601/611N 608/638/IMP700	WILDCAT	666/611/601/611N 608/638/IMP700	STONETRAC	666/611/601/611N 608/638/IMP700	SUNSTYRE	666/611/601/611N 608/638/IMP700
AGROMAX	666/611/601/611N 608/638/IMP700	AGROTRAC	666/611/601/611N 608/638/IMP700	AGMAXX	666/611/601/611N 608/638/IMP700	FREETRANS	666/611/601/611N 608/638/IMP700
AITC	666/611/601/611N 608/638/IMP700	MINITOP	666/611/601/611N 608/638/IMP700	COPRA'H	666/611/601/611N 608/638/IMP700	EKKA	666/611/601/611N 608/638/IMP700

DRAWN BY	YANG CHENBEI	CHECK BY	YUAN HONGTAO	APPROVED BY	SHEN CHUNXIN	QINGDAO QIHANG TYRE CO.,LTD.
----------	--------------	----------	--------------	-------------	--------------	------------------------------

<p>TREAD:6 PLIES NYLON SIDEWALL:6 PLIES NYLON</p>  <p>TREAD PATTERNS REFER TO ATTACHMENT NO.8</p>									
 <p>UPPER MOLD</p>					 <p>LOWER MOLD</p>				
1 420/70-18 IMP (16.5/70-18 IMP)					420/70-18 IMP (16.5/70-18 IMP)				
2  1-3 18 PLY RATING NYLON MAX LOAD 4250kg AT 590kPa COLD					2  1-3 18 PLY RATING NYLON MAX LOAD 4250kg AT 590kPa COLD 				
4 MADE IN CHINA					4 MADE IN CHINA				
5 BRAND TO ATTACHMENT NO.8					5 BRAND TO ATTACHMENT NO.8				
6 SAFETY WARNING:					6 SAFETY WARNING:				
7					7				
8					8 DOT 156 xxxx-date code				
9 RIM 13.00					9 RIM 13.00				
10 					10 				
11 TUBELESS					11 TUBELESS				
12 ROTATION					12 ROTATION				
13 PATTERN TO ATTACHMENT NO.8					13 PATTERN TO ATTACHMENT NO.8				
TIRE SIZE	LOAD INDEX	SPEED SYMBOL	TYPE	D(mm)	S(mm)	A(mm)	DWG.NO	DATE	
420/70-18	145/158	B	TUBE TYPE	1045	418	330	JS1.045.12.36.A	2022.12.15	
DRAWN BY	ZHANG TINGTING		CHECK BY	YUAN HONGTAO		APPROVED BY	SHEN CHUNXIN		QINGDAO QIHANG TYRE CO.,LTD.

ATTACHMENT NO.8

BRAND	PATTERNS	BRAND	PATTERNS	BRAND	PATTERNS	BRAND	PATTERNS
FORERUNNER	633/609/654/666N 639	GRIPSTAR	633/609/654/666N 639	ZWARTHZ	633/609/654/666N 639	AGMAX	633/609/654/666N 639
ROADGUIDER	633/609/654/666N 639	MULTISTAR	633/609/654/666N 639	PROTECTOR	633/609/654/666N 639	TROTAR	633/609/654/666N 639
SUPERGUIDER	633/609/654/666N 639	UNIGLORY	633/609/654/666N 639	BRONCO	633/609/654/666N 639	GlobeMaster	633/609/654/666N 639
TYREGUIDER	633/609/654/666N 639	COUGARTYRES	633/609/654/666N 639	HYPER	633/609/654/666N 639	ASTROAY	633/609/654/666N 639
MAVEO	633/609/654/666N 639	TERRAPLUS	633/609/654/666N 639	SEBA	633/609/654/666N 639	DURABLE	633/609/654/666N 639
SIRON	633/609/654/666N 639	WILDCAT	633/609/654/666N 639	STONETRAC	633/609/654/666N 639	SUNSTYRE	633/609/654/666N 639
AGROMAX	633/609/654/666N 639	AGROTRAC	633/609/654/666N 639	AGMAXX	633/609/654/666N 639	FREETRANS	633/609/654/666N 639
AITC	633/609/654/666N 639	MINITOP	633/609/654/666N 639	COPRA'H	633/609/654/666N 639	EKKA	633/609/654/666N 639

DRAWN BY	YANG CHENBEI	CHECK BY	YUAN HONGTAO	APPROVED BY	SHEN CHUNXIN	QINGDAO QIHANG TYRE CO.,LTD.
----------	--------------	----------	--------------	-------------	--------------	------------------------------

Tyre size : 420/70-18 IMP
Manufacturer : Qingdao Qihang Tyre Co., Ltd.

TEST REPORT

according to the UN-Regulation

**Uniform provisions concerning the approval of pneumatic tyres
for agricultural vehicles and their trailers**

UN-Regulation No.106

including all amendments until

Amend. 00, Suppl. 20

Approval Status

UN approval : E4*106R00/17*4641*00

Structure of the Test Report

Item No.

- 0. General information
 - 1. Tested ~~vehicle(s)~~ / object(s)
 - 2. Test record
 - 3. Appendices
 - 4. Statement of conformity
-

The Test Report shall be reproduced and published only in its entirety by the client. It may however be reproduced and published partially, but only with the written permission of the Technical Service.

Tyre size : 420/70-18 IMP
Manufacturer : Qingdao Qihang Tyre Co., Ltd.

0. General Information

- 0.1. Make (trade name of the manufacturer) : Qingdao Qihang Tyre Co., Ltd.
- 0.2. Type : 420/70-18 IMP
- 0.3. Category of vehicle : Not applicable
- 0.4. Name and address of the manufacturer : Qingdao Qihang Tyre Co., Ltd.
Nanbu Village, Mingcun Town,
Pingdu City, 266723 Qingdao,
Shandong, China (PRC)
- 0.5. No. of the information document : Not applicable
-Date of issue : ---
-Date of last change : ---

1. Tested vehicle(s) / object(s)

- 1.1. Description
- 1.1.1 ~~Vehicle~~ / object
- Commercial description : Not applicable
- Type(s) / ~~variant(s)~~ / ~~version(s)~~ : 420/70-18 IMP
- Identification number : Not applicable
- 1.1.2 Condition of ~~vehicle(s)~~ / object(s) : New / ~~used~~ / ~~pretested~~
- 1.2. Worst case selection : The determination of "worst case configuration" (WCC) has to be done according to type approval process (MS-0000480), section 5.6.
- ~~Only one variant/version, so no worst case assessment required.~~
- ~~There is no worst case selection applicable because all variants mentioned in the information folder are tested.~~
- Paperwork extension, please see previous test report(s) for worst case information.
- 1.3. Remarks : Not applicable

Tyre size : 420/70-18 IMP
Manufacturer : Qingdao Qihang Tyre Co., Ltd.

2. Test record

- 2.1. Equipment for measuring and testing : The test facilities / measurement equipment used were in compliance with the test requirements
- 2.1.1 Specifications for the test site : Not applicable
- 2.1.2 Subcontracting : Not applicable
- 2.2. Test results : See Appendix 1
- According to Paragraph 6. and 7. of the UN-Regulation No.106
- 2.2.1 Test results referring to measurements : Pass / ~~Fail~~
- 2.2.2 Attributive tests : Not applicable
- 2.2.3 Alternative test methods : Not applicable
- Remarks concerning extension : ~~The type has been tested according to the modification(s) mentioned in appendix 0.~~
- ~~The new parts meet the requirements of the regulation.~~
- An actual practical test of the object was not necessary. The results of the previous test(s) are still valid.
- 2.3 Additional information : The results of the test refer exclusively to the object(s) mentioned under point 1. of this report.
- Test site : Qingdao Product Quality Testing Research Center
No.77, Keyuan Weisi Road,
Laoshan District, Qingdao,
Shandong, China (PRC)
- Test date : August 14, 2020
- 2.4 Remarks : Not applicable

Tyre size : 420/70-18 IMP
Manufacturer : Qingdao Qihang Tyre Co., Ltd.

3. Appendices

Appendix 0 : List of modifications
Appendix 1 : Test minutes

4. Statement of conformity

The Information Document listed in section 0.5., and the type described therein, comply with the requirements stated on page 1. The test results in this report refer to the ~~vehicle(s)~~ object(s) described under section 1.1. With regards to the required level of performance to be achieved, the tested samples were representative for the type to be approved (see section 1.2).

Qingdao / March 20, 2023
LX/YPC



Xin Liu
Technical Expert Technical Service

Tyre size : 420/70-18 IMP
Manufacturer : Qingdao Qihang Tyre Co., Ltd.

List of modifications**Appendix 0**

Correction of	:	---
Modification of	:	Update the technical service address Update the regulation supplement number Update the construction image
Addition of	:	Trade mark(s) and trade description(s) Alternative tyre size
Deletion of	:	Trade description(s)

Tyre size : 420/70-18 IMP
Manufacturer : Qingdao Qihang Tyre Co., Ltd.

Test minutes**Appendix 1**

1. Test data : TUBELESS
- 1.1. Test object(s) markings
 - Trade name or mark : FORERUNNER
 - Tyre type designation : QH638
 - Plies of Tread / Sidewall : 6 NYLON / 6 NYLON
 - Tyre size designation : 420/70-18 IMP
 - Category of use : Implement - mixed applications
 - Structure indication : Diagonal
 - Symbol of structure : ---
 - Speed category : B
 - Load-Capacity Indices(L.I.) : ---
 - For traction(implement only) : 145
 - For trailer (implement only) : 158
 - The supplement service description : ---
 - Inflation pressure for testing : 590 kPa
 - Ply-rating number : 18 PR
 - Word in case of without inner tube : word "TUBELESS"
 - Date of manufacture : 1020
- 1.2. Dimension measurement according to Annex 6
 - Measuring rim : 13.00x18
 - Inflation pressure after mounting on measuring rim : 590 kPa
 - Inflation pressure : 590 kPa
 - Conditioning of tyre : more than 24 hours
 - Inflation pressure after conditioning : 590 kPa
 - Overall width at six equally spaced points

1. 409.0 mm	2. 408.0 mm	3. 409.0 mm
4. 409.0 mm	5. 409.0 mm	6. 409.0 mm
Max.: 409.0 mm		

Tyre size : 420/70-18 IMP
Manufacturer : Qingdao Qihang Tyre Co., Ltd.

- | | | |
|---|---|---|
| Circumference | : | 3381 mm |
| Outer diameter | : | 1076.2 mm |
| 1.3. Resistance to bursting test according to annex 8 | | |
| Test machine | : | SUP-JGST-10 |
| Test rim | : | 13.00x18 |
| Water pressure limit (between 6 bar and 10 bar) | : | 1000 kPa |
| Test preparation | : | The test preparation is in compliance with the requirements of paragraph 1 of annex 8. |
| Test procedure | : | The test procedure is in compliance with the requirements of paragraph 2 of annex 8. |
| Inspection after test | : | The tyre which, after undergoing the relevant test to assess the resistance to burst, does not exhibit any tread separation, ply separation, cord separation, broken beads or broken cords. |
| 1.4. Load/speed performance test according to Annex 9 | : | Not applicable |

Tyre size : 420/70-18 IMP
Manufacturer : Qingdao Qihang Tyre Co., Ltd.

2. Test data : TUBE TYPE
- 2.1. Test object(s) markings
- Trade name or mark : FORERUNNER
- Tyre type designation : QH638
- Plies of Tread / Sidewall : 6 NYLON / 6 NYLON
- Tyre size designation : 420/70-18 IMP
- Category of use : Implement - mixed applications
- Structure indication : Diagonal
- Symbol of structure : ---
- Speed category : B
- Load-Capacity Indices(L.I.) : ---
- For traction(implement only) : 145
- For trailer (implement only) : 158
- The supplement service description : ---
- Inflation pressure for testing : 590 kPa
- Ply-rating number : 18 PR
- Word in case of without inner tube : word "TUBE TYPE"
- Date of manufacture : 1020
- 2.2. Dimension measurement according to Annex 6
- Measuring rim : 13.00x18
- Inflation pressure after mounting on measuring rim : 590 kPa
- Inflation pressure : 590 kPa
- Conditioning of tyre : more than 24 hours
- Inflation pressure after conditioning : 590 kPa
- Overall width at six equally spaced points
- | | | | | | |
|----|----------|----|----------|----|----------|
| 1. | 411.0 mm | 2. | 411.0 mm | 3. | 412.0 mm |
| 4. | 413.0 mm | 5. | 411.0 mm | 6. | 411.0 mm |
- Max.: 413.0 mm
- Circumference : 3372mm
- Outer diameter : 1073.4 mm

Tyre size : 420/70-18 IMP
Manufacturer : Qingdao Qihang Tyre Co., Ltd.

- 2.3. Resistance to bursting test according to annex 8
- | | |
|---|---|
| Test machine | : SUP-JGST-10 |
| Test rim | : 13.00x18 |
| Water pressure limit (between 6 bar and 10 bar) | : 1000 kPa |
| Test preparation | : The test preparation is in compliance with the requirements of paragraph 1 of annex 8. |
| Test procedure | : The test procedure is in compliance with the requirements of paragraph 2 of annex 8. |
| Inspection after test | : The tyre which, after undergoing the relevant test to assess the resistance to burst, does not exhibit any tread separation, ply separation, cord separation, broken beads or broken cords. |
- 2.4. Load/speed performance test according to Annex 9 : Not applicable
3. Remarks : Test data refer to report No.: 86-R106-1263/20-00 corresponding to type approval No.: E4*106R00/17*4641*00